

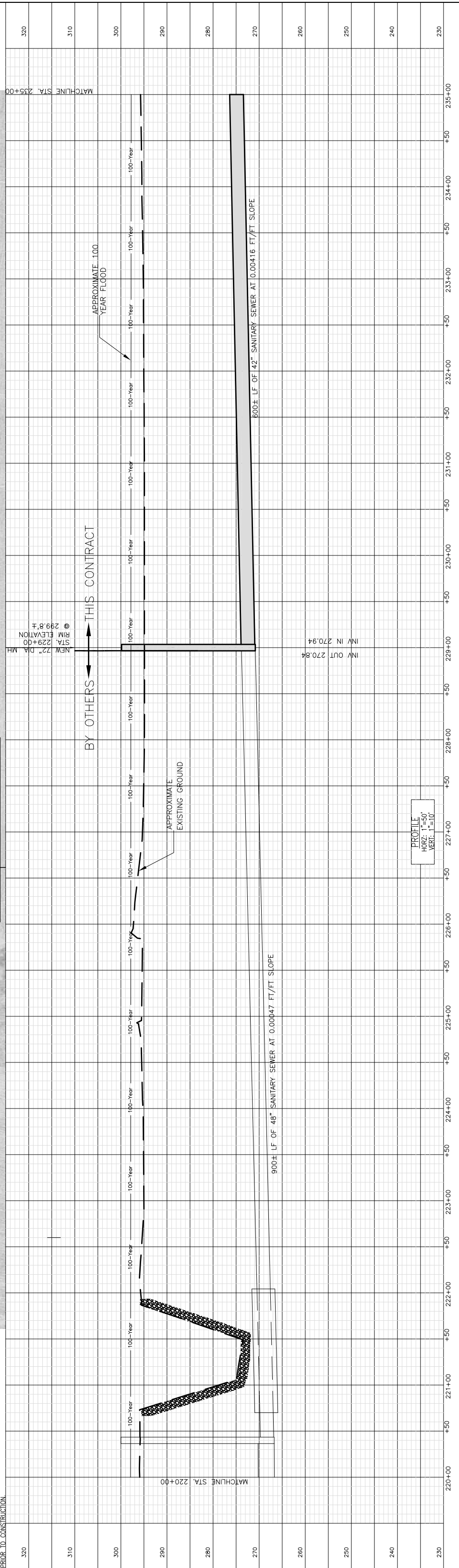
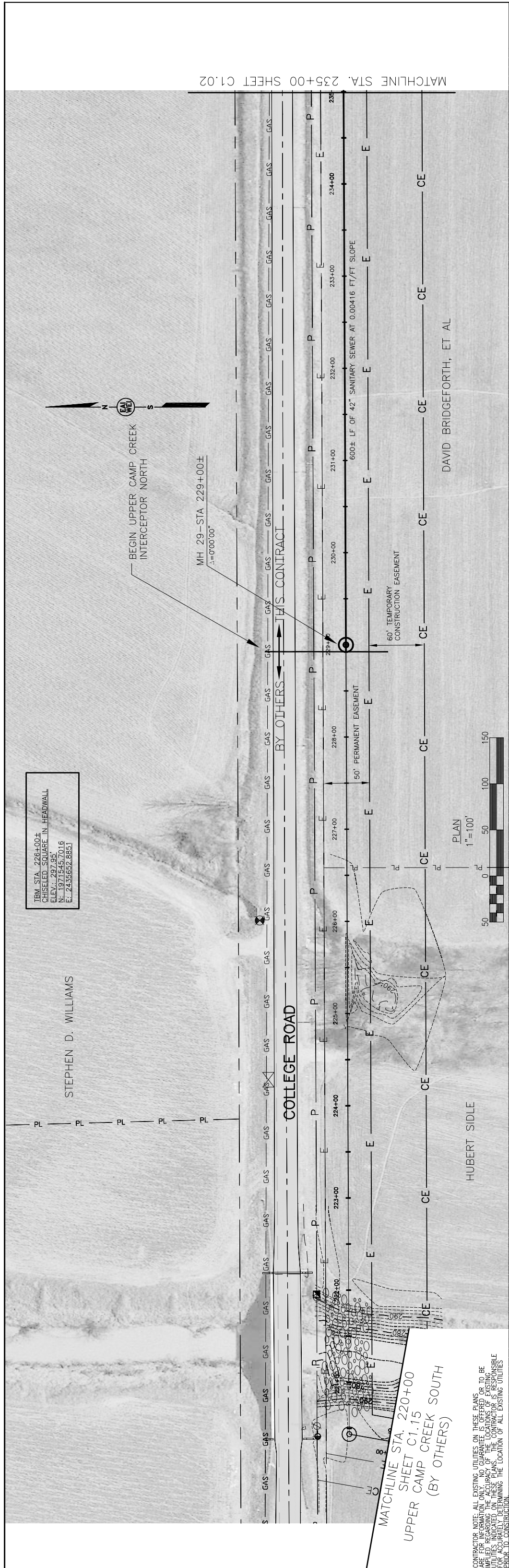
TM STA. 226+00+
CHISELED SQUARE IN HEADWALL
ELEV. = 297.95'
N: 19771545, 7016
E: 2435652, 8851

STEPHEN D. WILLIAMS

COLLEGE ROAD

MATCHLINE STA. 235+00 SHEET C1.02

MATCHLINE STA. 220+00
SHEET C1.15
UPPER CAMP CREEK SOUTH
(BY OTHERS)



CONTRACTOR NOTE: ALL EXISTING UTILITIES ON THESE PLANS ARE FOR INFORMATION ONLY. NO GUARANTEE IS OFFERED OR TO BE IMPLIED REGARDING THE ACCURACY OF THE LOCATIONS OF EXISTING UTILITIES. CONTRACTOR TO BE RESPONSIBLE FOR ACCURATELY DETERMINING THE LOCATION OF ALL EXISTING UTILITIES PRIOR TO CONSTRUCTION.

DESIGNED	THM	DATE	OCTOBER 2003					
			SCALE	AS NOTED				
DRAWN	THM	CHECKED	APP'D	BY	DATE	REVISIONS	PROJECT NO.	
							16535.05	
NO.	DATE	MATURE	BY	APP'D	DATE	REVISIONS	CONTRACT	
							1	
DESOTO COUNTY REGIONAL UTILITY AUTHORITY UPPER CAMP CREEK INTERCEPTOR NORTH DESOTO COUNTY, MISSISSIPPI								
PLAN AND PROFILE SHEET STA. 220+00 to STA. 235+00								

100% SFT

